



## Simenti

Josep Patsi

Wall fixture IP66 Simenti LED 10.7 LED warm-white 3000K ON-OFF Cement 365lm

### Technical features

Luminaire total power: 10.7W  
Real lumens: 365  
Real lm/W: 34  
Correlated Colour Temperature (CCT): LED warm-white 3000K  
Lens / reflector angle: FLOOD 73°  
Structure material: Concrete  
Structure finish: Cement  
Diffuser material: Glass  
Diffuser finish: Sandblasted  
Voltage / frequency: 100-240V/50-60Hz  
Dimming protocol: ON-OFF  
Power Factor: 0.90  
Useful life: 50,000h L80B20  
Warranty: 5 años  
Resistant to marine environments: Yes  
Easily recyclable luminaire



### Luminotechnic features

CRI: 80  
MacAdam steps: 2  
Photobiological risk: RG1

Lampholder	Quantity	Light source power (W)	Correlated Colour Temperature (CCT)
LED	1	9.3W	LED warm-white 3000K

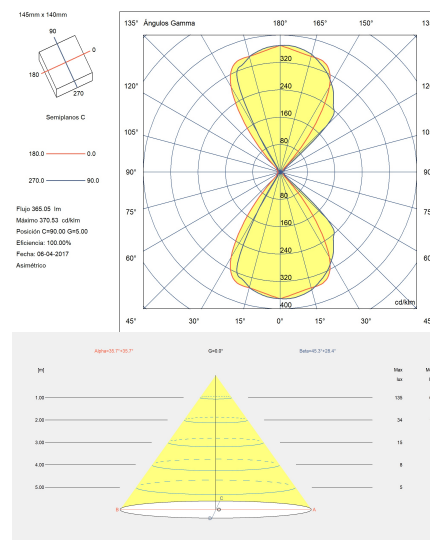
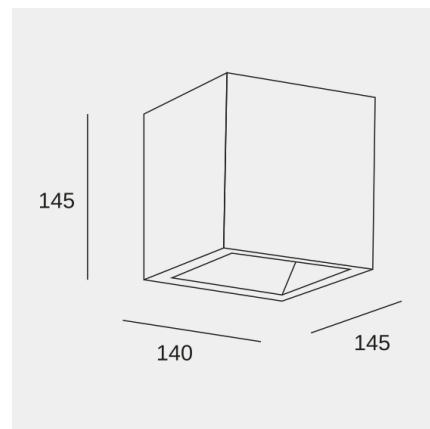
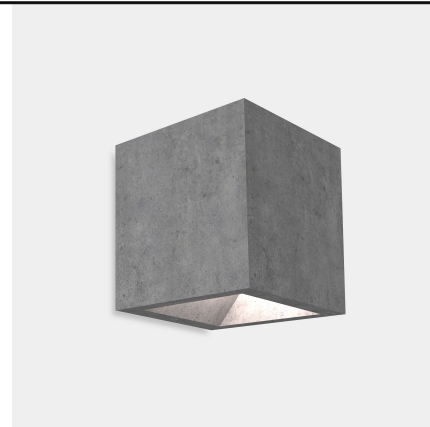


Image may not match reference. LedsC4 reserves the right to amend any of the product's components. The data related to flux, power and colour temperature may be subject to changes made by the manufacturer.



## Simenti

Josep Patsi

Wall fixture IP66 Simenti LED 10.7 LED warm-white 3000K ON-OFF Cement 365lm

### Logistics



x 4

Net weight (kg): 2.86

Packaged weight (kg): 3.2

Packaging: 210mm x 210mm x 215mm

### Light application



Image may not match reference. LedsC4 reserves the right to amend any of the product's components. The data related to flux, power and colour temperature may be subject to changes made by the manufacturer.