



AMPULLA-PIC
concrete pendant lamp



Properties

This product is made of concrete. Design by Urbi et Orbi studio in 2012.

Concrete is an extremely durable material, hence can be widely used in many applications. Concrete however, can stain or scratch or break if not used with care. It behaves like marble, ceramic or stone.

The raw material that we use is a unique reinforced mixture of cement, additives enhancers and special aggregates.

Aftercare

Always use soft sponges.

We recommend, not to rub the surface with sharp objects like wire, metal tools or hard sponges.



Dimensions/Weight

Diameter: 6 cm
Height: 9 cm
Edge thickness: 0,5 cm
0,5kg

Cable

Textile

Standard Colors:



Optional Colors:



More Colors on demand

Dimension: 1,9m max. (longer on demand)

Ceiling rose: Nickel Matte

Socket/Light Bulb

E27

Recommended light bulb: max watt (W) 70 eco

Light bulb not included

Input (V):110-230

Energy Class

from D to A++

Packaging

16x16x21cm

1kg

RECYCLED CARDBOARD 

Colors sort by category

Colored in its mass with pigments

•Grey



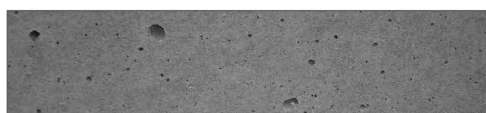
•Basic



•Sand

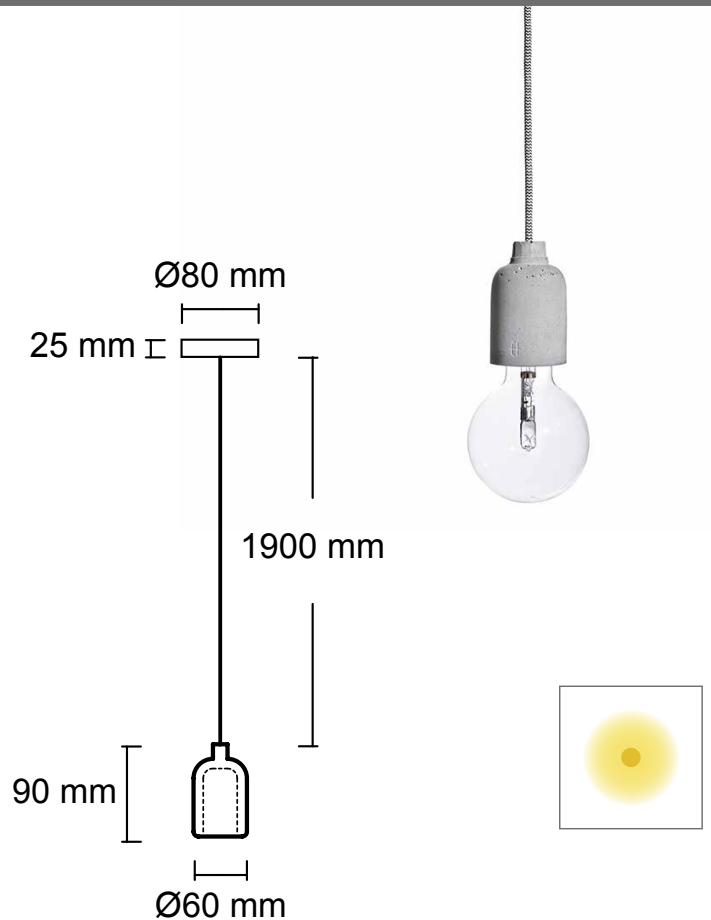


•Appearance



Every piece may appears with color tone variants at its surface, as also between the pieces or the sample. Concrete surface displays several air holes.

This is a natural characteristic of concrete.



 **CE IP20**