

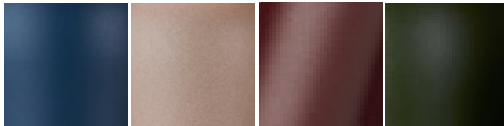


# PENSILE

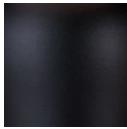
Pensile is a modern, Swedish made design lighting that gives a comfortable impression and fits just as well in public spaces as in your private favorite room. The base is built out of bent pipes lacquered in timeless colors which is combined with a textile shade, either in matching or deviating colors. The shade's textile material also has desirable properties such as flame retardant and also sound absorbing properties, which provides an extra security in your product selection.

Design: Joakim Fihn

## Base 3709

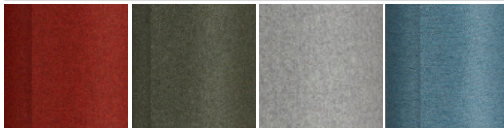


**200** Azurite  
**202** Sand structure  
**277** Dark red  
**282** Bottle green



**86** Black structure

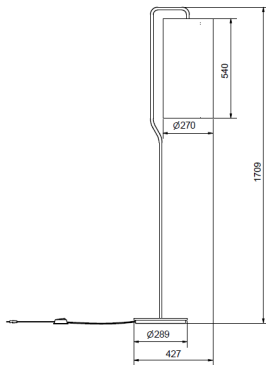
## Wool shade 9479




**740** Rust  
**741** Green  
**742** Gray  
**743** Blue



**745** White



Item no.	Base 3709, Wool shade 9479
Category	Floor Lamp
Material	Metal, textile
Cord	2,7 m textile cable
Switch	Switch on cord
Dimmable function	No
Voltage	230V
Socket	E27
Wattage max	20W
Classification	
IP Class	IP20
Height incl. shade mm	1709
Depth incl. shade mm	427
Height shade mm	540
Ø shade mm	270
Light source included	No
Recommended light source	872209, E27 DIM 8W



# BELID