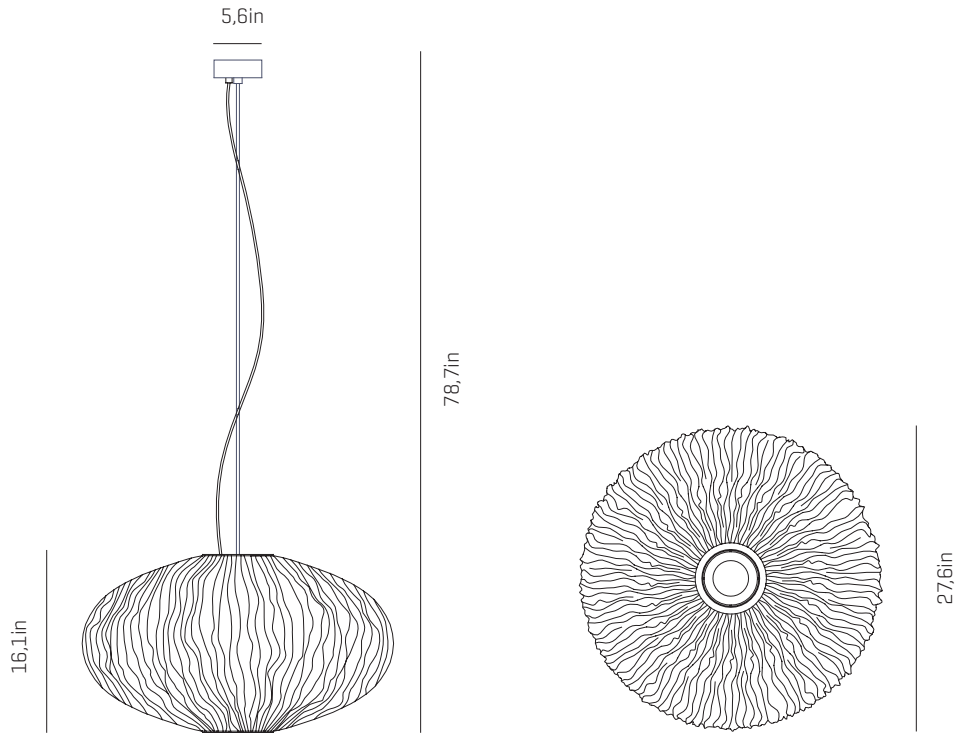


a

by arturo alvarez

coral collection

LED



USA & Canada

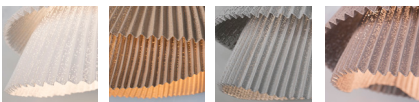
ref. COAU04G-LD



MATERIALS & COMPONENTS

LAMPSHADE

Painted stainless steel | One color to choose



BL

BE

G

T

CUSTOM
COLOR

Steel gloss nickel-plated and stainless steel

CANOPY AND CABLE

Steel gloss nickel-plated and stainless steel

Transparent or black cable

Standard: 78,7in

Length customizable

LIGHT SOURCE BUILT IN

120V - 60Hz

⊙ 36,7W 3000K 4086lm built-in
upon request 2700K 3938lm

Dimming system: 0-10V

OTHER DATA

NET WEIGHT

9,9lb

PACKAGING

71x 71x 42in

17,6lb

ELECTRICAL FEATURES



CERTIFICATIONS



Coral Seurchin

ref. COAU04G-LD

Suitable for indoor use, at 77°F

Convient pour une utilisation en intérieur à une température ambiante de 77°F

Apta para uso interior a temperatura ambiente de 77°F

Box contains | Contenu de la boîte | Contenido de la caja:

A - Lampshade | Abat jour | Tulipa [1]

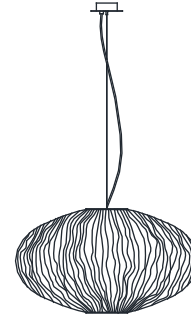
B - Holding piece | Pièce de fixation | Pieza de sujeción [1]

C - Security screws | Vis de sécurité | Tornillos de seguridad [2]

D - Wall Plugs | Prise murale | Tacos [2]

E - Canopy | Rosace | Florón [1]

F - Screws | Vis | Tornillos [2]

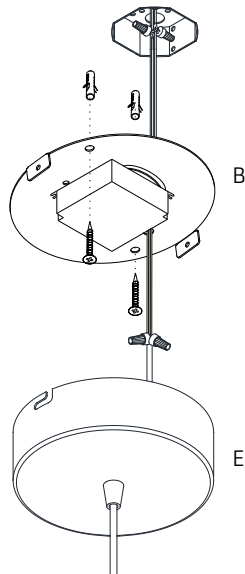


LED

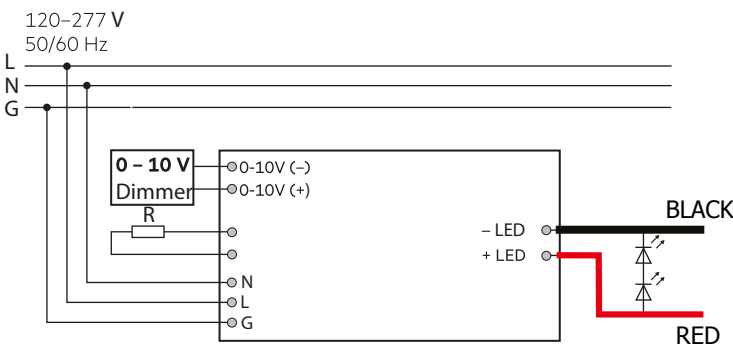
SAFETY NOTE: Switch off mains supply before commencing installation

INFORMATION DE SÉCURITÉ: Débranchez l'alimentation avant de commencer l'installation

INDICACIÓN DE SEGURIDAD: Desconecte la alimentación eléctrica antes de empezar la instalación



1.1



1.2

1

1.1 Drill the holes in the ceiling, fit the wall plugs into them and screw the holding piece.
1.2 Switch off the main electrical supply and do the electric connection, please follow the instructions.

1.1 Faites les trous dans le plafond, placez les chevilles et vissez la pièce de serrage.
1.2 Débranchez l'alimentation principale et effectuez le raccordement électrique en suivant les instructions.

1.1 Realizar los agujeros en el techo, colocar los tacos y atornillar la pieza de sujeción.
1.2 Desconectar la corriente principal y hacer la conexión eléctrica siguiendo las instrucciones.

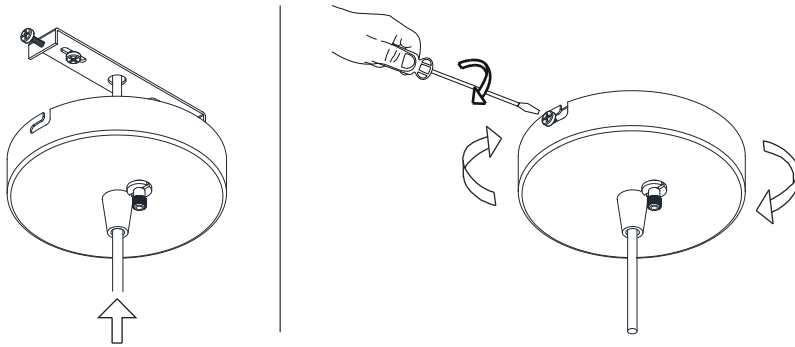
CODE COLORS:

WHITE (N)

BLACK (L)

GREY (DIMMING -)

PURPURE (DIMMING +)



2

Insert the canopy in the holding piece and tight the security screws.

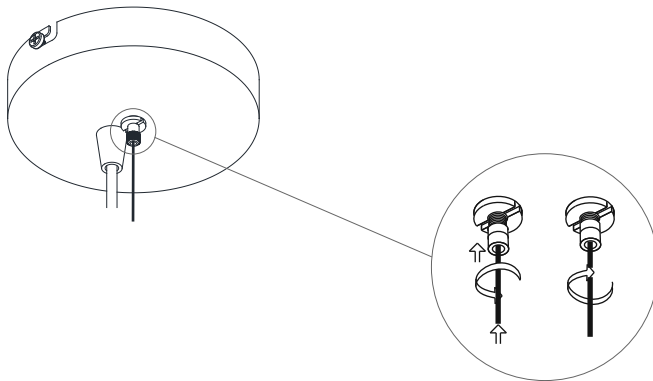
Tighten the strain relief situated on the canopy.

Insérer le baldaquin dans la pièce de serrage et serrer les vis de sécurité.

Serrer le tendeur de câble situé sur le capot.

Encajar el florón en la pieza de sujeción y apretar los tornillos de seguridad.

Apretar el tensor del cable situado en el florón.



3

Loosen the security nut and introduce the steel wire through it. Tighten the security nut.

Desserrer le contre-écrou et insérer le câble en acier. Serrer le contre-écrou.

Aflojar la tuerca de seguridad e introducir el cable de acero. Apretar la tuerca de seguridad.