



Properties

This product is made of concrete. Valentino Marengo in 2017.

Concrete is an extremely durable material, hence can be widely used in many applications. Concrete however, can stain or scratch or break if not used with care. It behaves like marble, ceramic or stone.

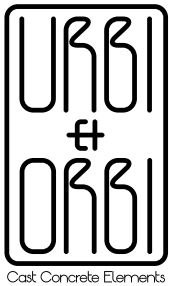
The raw material that we use is a unique reinforced mixture of cement, additives enhancers and special aggregates.

Aftercare

Always use soft sponges.

We recommend, not to rub the surface with sharp objects like wire, metal tools or hard sponges.





OCT 17'

Technical sheet / Specifications / Aftercare

PROJECTA
concrete outdoor wall light
design by Valentino Marengo
2017

Dimensions/Weight

Outdoor / indoor

16,5x11cm

Height: 23,5cm

2,5kg

Wall mounting even without recessed box



Light Source

Led Module

24 Led (NICHIA) / 2.2W

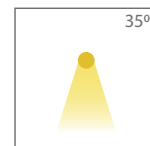
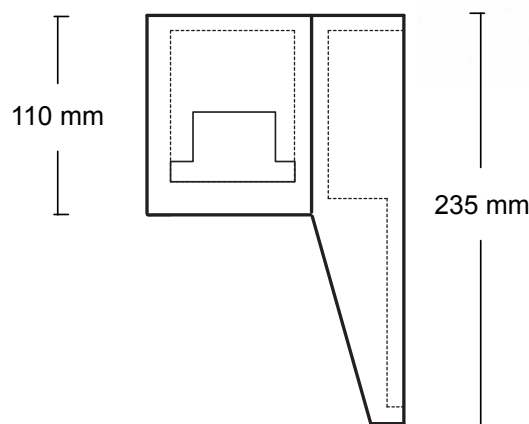
Input (V):230V - 12V - 24V

>50.000h.

280 Lumen - 35°

3000K, 4000K, 5000K

External connection IP68



Energy Class

A+

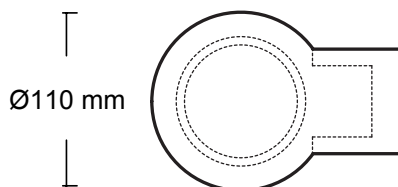
Packaging

31x31x28cm

3,5kg

RECYCLED CARDBOARD

165 mm



CE IP65

Colors sort by category

Colored in its mass with pigments

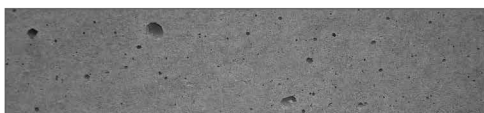
•Basic



•Sand



•Appearance



Every piece may appears with color tone variants at its surface, as also between the pieces or the sample. Concrete surface displays several air holes.

This is a natural characteristic of concrete.

All rights reserved."Urbi et Orbi" brand and logos are registered trademarks. The industrial models of the product, the designation and the product photos are protected by the applicable copyright laws.

Urbi et Orbi reserves the right, in order to improve the capacities of the products, to make modifications to them, as if reference the raw materials, dimensions, weight, qualities or features, without prior notice.

