

# K REX KRALJ



Seat upholstery



Seat and back upholstery



Full upholstery

## SHELL CHAIR

Dining Chair, designer Niko Kralj, 1956

### Weights and volumes

|   |              |
|---|--------------|
| Product weight (kg)                           | 5,2          |
| Nett. weight product including packaging (kg) | 7,2          |
| Nett. Size packaging (cm) (d x w x h)         | 58 x 49 x 88 |

|   |                    |
|---|--------------------|
| Product weight (lb)                           | 11,5               |
| Nett. weight product including packaging (lb) | 15,9               |
| Nett. Size packaging (inches) (w x d x h)     | 19,3 x 22,8 x 34,6 |

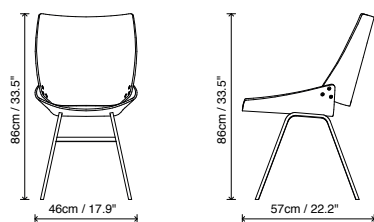
### Material

oak or walnut plywood seat and back & powdercoated steel frame  
upholstery PU foam

### Strenght & stability

Complies with level 1, according to EN16139:2013 and with reference to norms EN1728:2012 & EN1022:2015

### Product measurements



### Finishes



natural oak



natural walnut

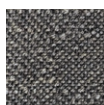


black oak



steel parts  
black  
powdercoated

### Fabric and leathers



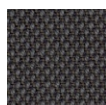
Novak



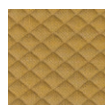
Rohi Novum



Kvadrat  
Harald 3



Kvadrat  
Steelcut Trio 3



Kvadrat  
Mosaic 2



Mastrotto  
Linea



Sorensen  
Dunes