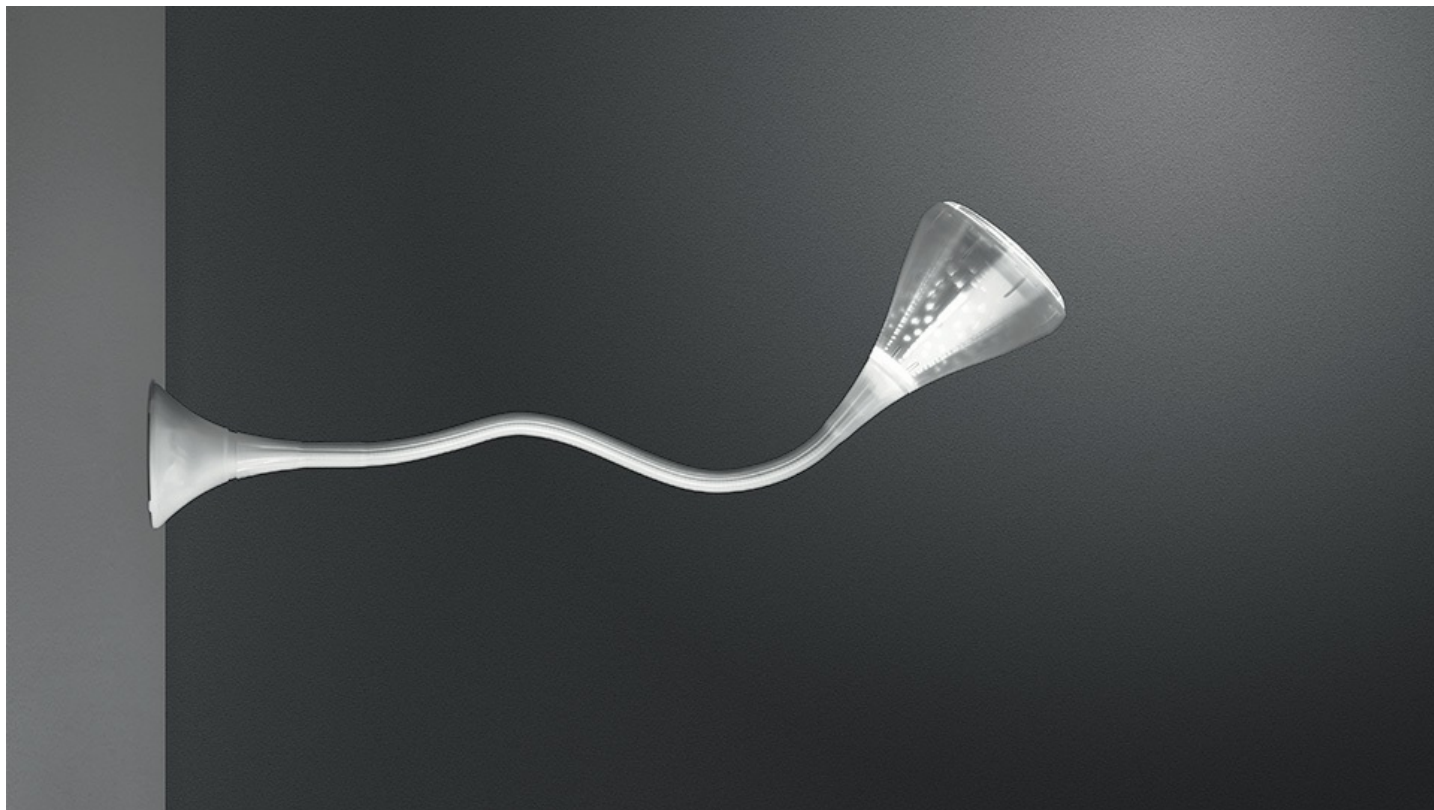


PRODUCT DATA SHEET

Pipe Wall/ceiling



Wall/ceiling lamp with flexible painted steel structure, covered with a natural anti-yellowing silicone case; wall attachment and diffuser in transparent rubber-effect painted polycarbonate; mirror aluminium reflector with random perforations; painted steel bottom plate. The new internal diffuser is reinterpreting the old fluorescent lamp using a modern LED source, this guarantees the same optical performance with less power consumption and a better quality of light.

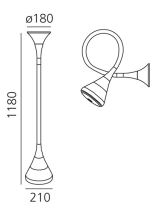
Transparent
○

LED Wall/Ceiling

960°



Watt	Luminous Flux (lm)	CCT	Color	Code	Product name
27W	1763lm	2700K	○	0671W10A	Pipe Wall/Ceiling LED 2700K

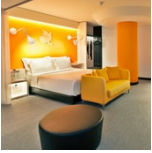


Designers



› Herzog & De Meuron

Projects



› Hotel Sana
Evolution