

PRODUCT DATA SHEET

Pipe Suspension



Flexible painted steel structure, covered with a natural anti-yellowing silicone case; ceiling rose and diffuser in transparent rubber-effect painted polycarbonate; mirror aluminium reflector with random perforations; painted steel bottom plate. The new internal diffuser is reinterpreting the old fluorescent lamp using a modern LED source, this guarantees the same optical performance with less power consumption and a better quality of light.

Transparent
○

LED Suspension



Watt	Luminous Flux (lm)	CCT	Color	Code	Product name
27W	1763lm	2700K	○	0672W10A	Pipe Suspension LED 2700K

960°



Designers



› Herzog & De Meuron

Projects



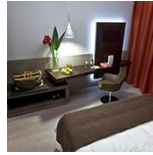
› Afrodit



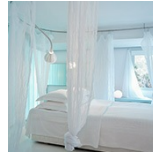
› IH HOTEL
WATT13



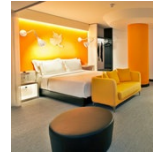
› Hotel Olympia



› Des Art Hotel



› Ekies Hotel



› Hotel Sana
Evolution



› Stefano's Fine
Food Factory



› Restaurant
Prairial



› Syn Bar



› Villa Wetzel